

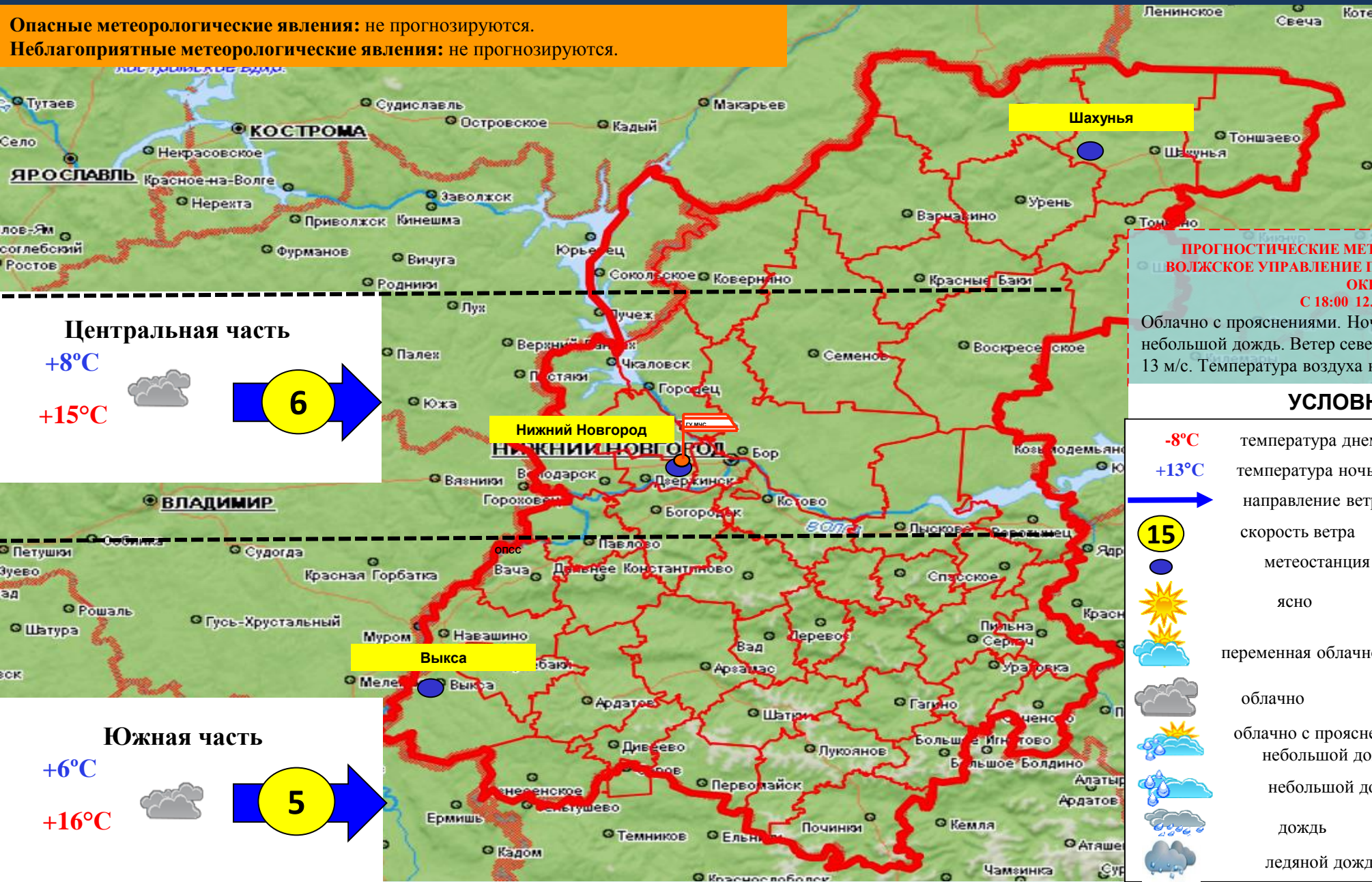


**ЕЖЕДНЕВНЫЙ ПРОГНОЗ ВОЗНИКНОВЕНИЯ
ЧРЕЗВЫЧАЙНЫХ СИТУАЦИЙ НА ТЕРРИТОРИИ
НИЖЕГОРОДСКОЙ ОБЛАСТИ
на 13.04.2024**

ЕЖЕДНЕВНЫЙ МЕТЕОРОЛОГИЧЕСКИЙ ПРОГНОЗ НА ТЕРРИТОРИИ НИЖЕГОРОДСКОЙ ОБЛАСТИ



Опасные метеорологические явления: не прогнозируются.
Неблагоприятные метеорологические явления: не прогнозируются.



Северная часть

+5°C

+12°C

6

Центральная часть

+8°C

+15°C

6

Южная часть

+6°C

+16°C

5

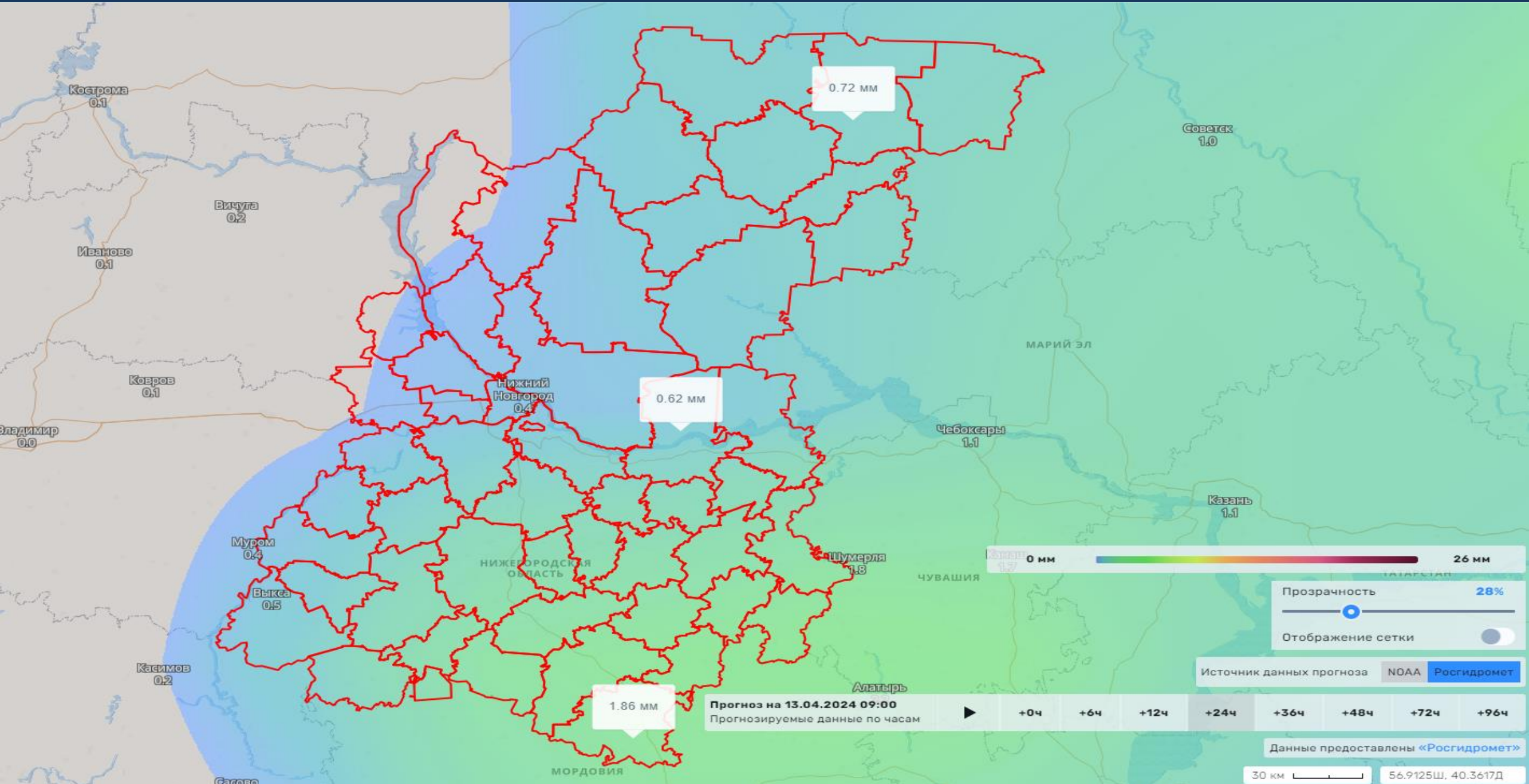
ПРОГНОСТИЧЕСКИЕ МЕТЕОУСЛОВИЯ ПО ДАННЫМ ФГБУ «ВЕРХНЕ-ВОЛЖСКОЕ УПРАВЛЕНИЕ ПО ГИДРОМЕТЕОРОЛОГИИ И МОНИТОРИНГУ ОКРУЖАЮЩЕЙ СРЕДЫ»
 С 18:00 12.04.2024 г. до 18:00 13.04.2024 г.

Облачно с прояснениями. Ночью в большинстве районов, днем местами небольшой дождь. Ветер северо-западный 5-10 м/с, отдельные порывы до 13 м/с. Температура воздуха ночью +3,+8°, днем 7-12°.

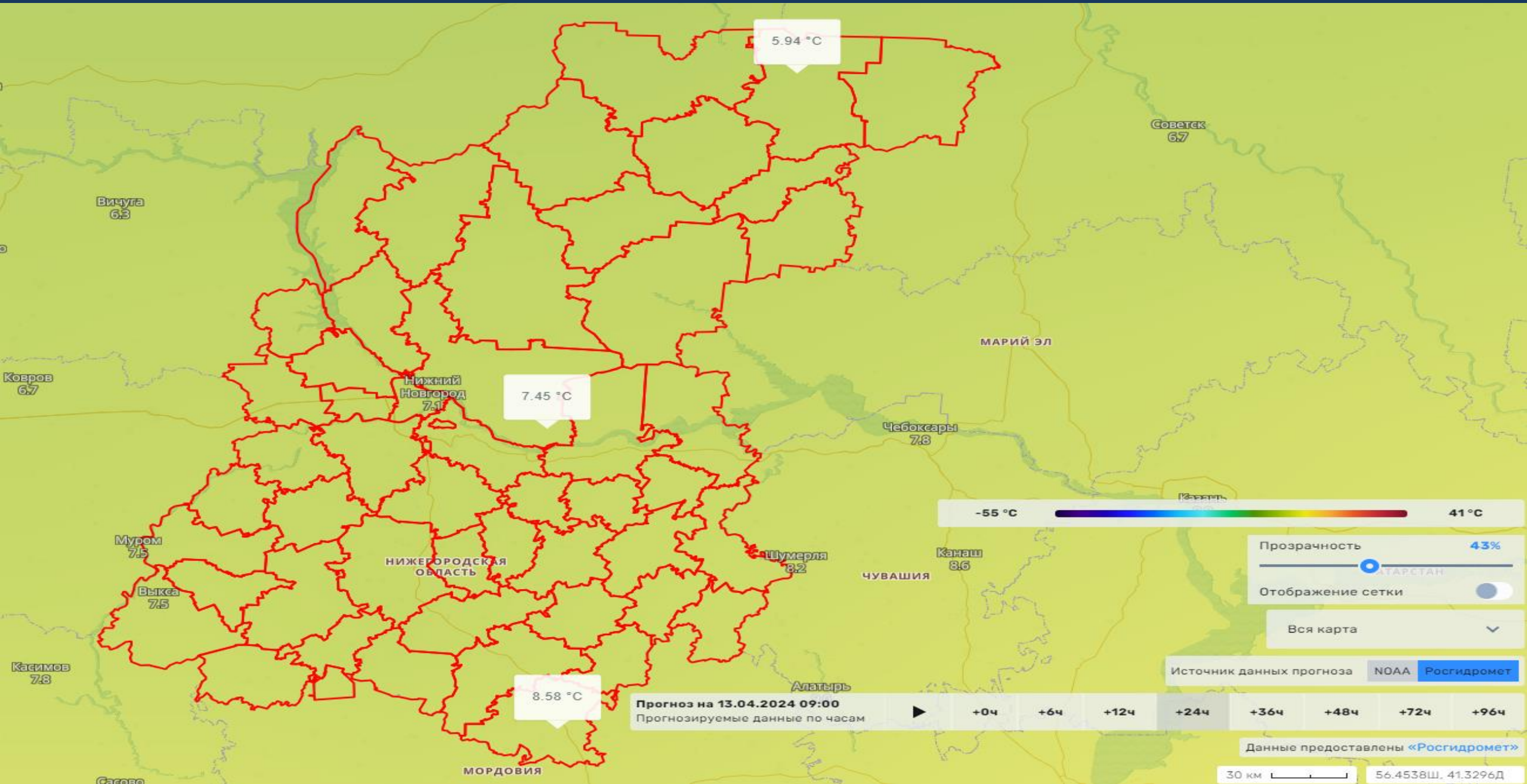
УСЛОВНЫЕ ОБОЗНАЧЕНИЯ

-8°C	температура днем		небольшой снег
+13°C	температура ночью		снег/сильный снег
	направление ветра		мокрый снег
	скорость ветра		облачно с прояснениями, небольшой снег
	метеостанция		метель
	ясно		гололедица
	переменная облачность		туман
	облачно		порывы ветра
	облачно с прояснениями, небольшой дождь		
	небольшой дождь		
	дождь		
	ледяной дождь		

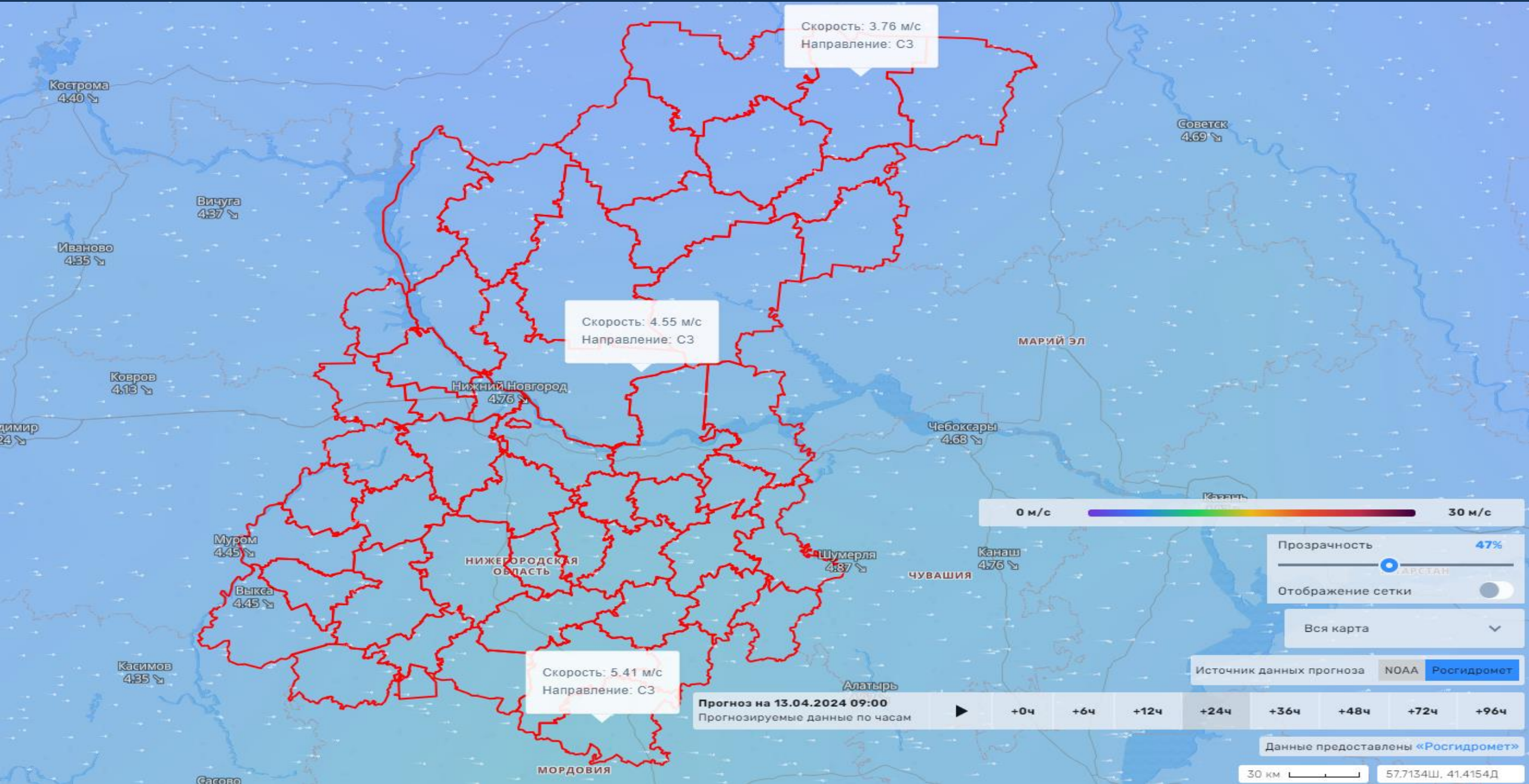
ПРОГНОЗ ВЫПАДЕНИЯ ОСАДКОВ НА ТЕРРИТОРИИ НИЖЕГОРОДСКОЙ ОБЛАСТИ ПО ДАННЫМ АТЛАСА ОПАСНОСТЕЙ И РИСКОВ



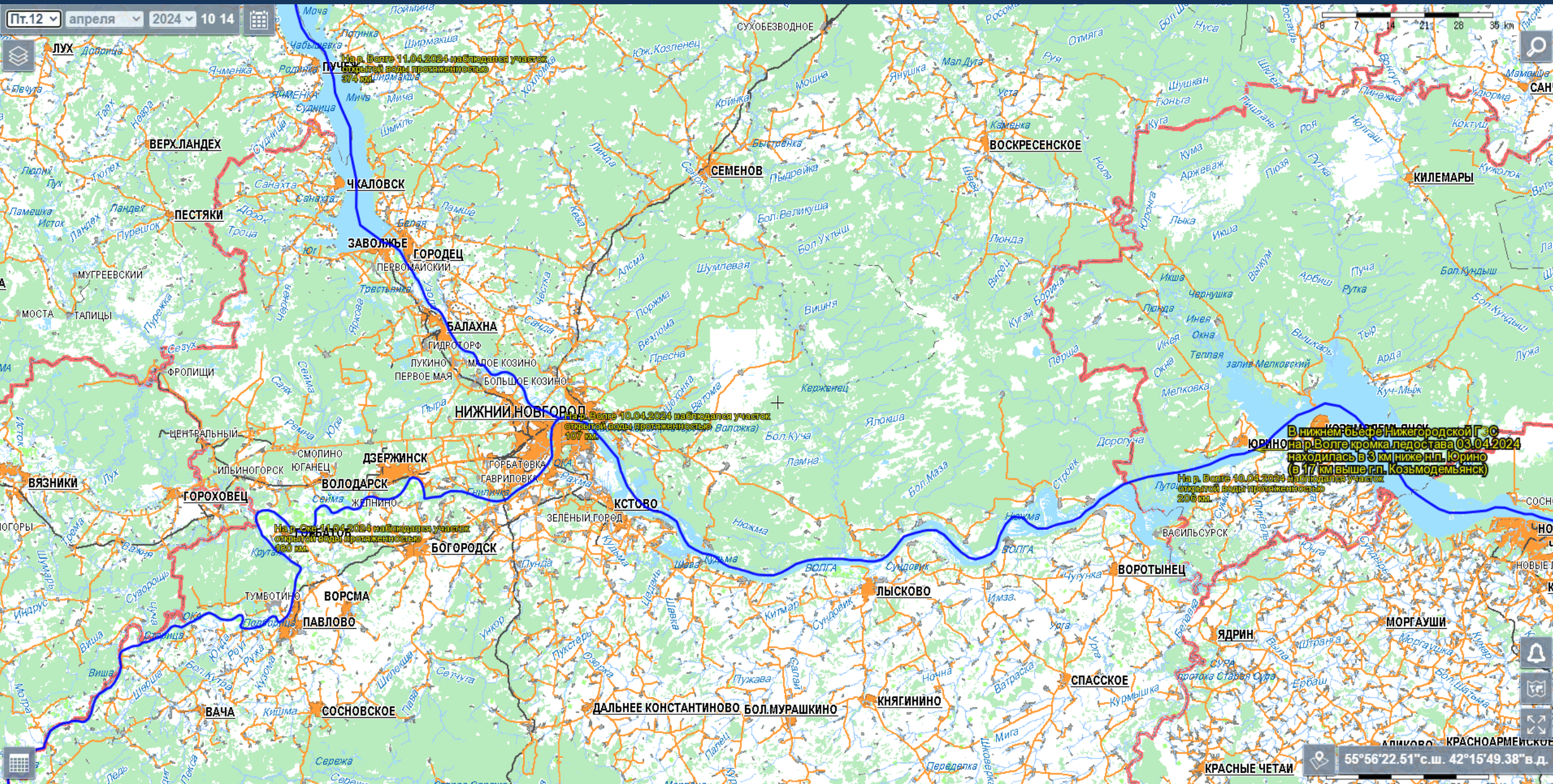
ПРОГНОЗ ТЕМПЕРАТУРНОГО РЕЖИМА НА ТЕРРИТОРИИ НИЖЕГОРОДСКОЙ ОБЛАСТИ ПО ДАННЫМ АТЛАСА ОПАСНОСТЕЙ И РИСКОВ



ПРОГНОЗ ВЕТРОВОЙ НАГРУЗКИ НА ТЕРРИТОРИИ НИЖЕГОРОДСКОЙ ОБЛАСТИ ПО ДАННЫМ АТЛАСА ОПАСНОСТЕЙ И РИСКОВ



МОНИТОРИНГ ЛЕДОВОЙ ОБСТАНОВКИ НА ТЕРРИТОРИИ НИЖЕГОРОДСКОЙ ОБЛАСТИ



МОНИТОРИНГ ПАВОДКОВОЙ ОБСТАНОВКИ НА ТЕРРИТОРИИ НИЖЕГОРОДСКОЙ ОБЛАСТИ НА РЕКЕ ТЕША П. ЗАРЕЧНОЕ Г.О. Г. АРЗАМАС



EO Browser ENGLISH [Login](#)

Discover Visualize Compare Pins

Dataset: Sentinel-2 L2A [Show L1C](#)

Date: 2024-04-04 Timespan

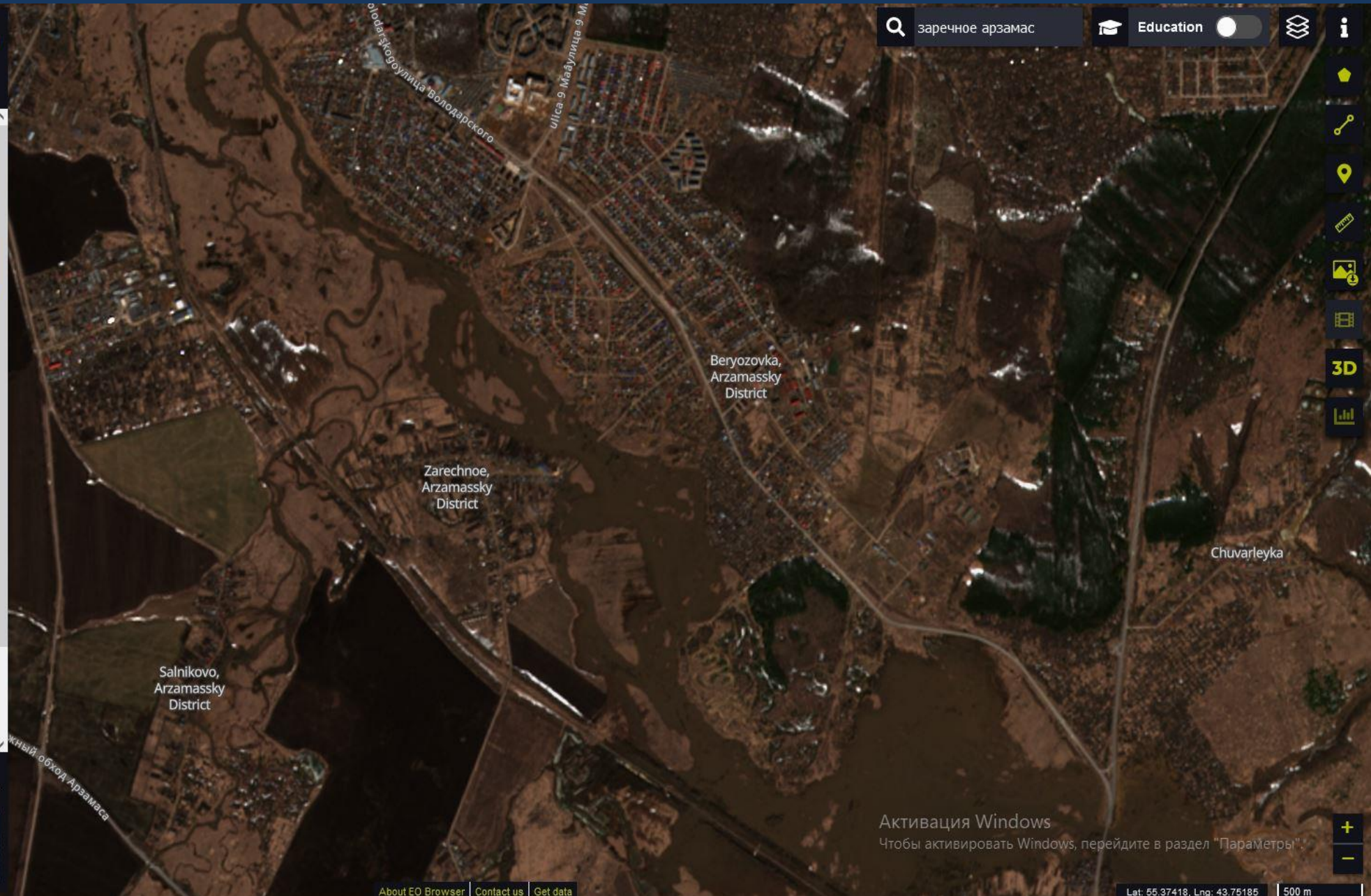
- True color**
Based on bands 4,3,2
- False color
Based on bands 8,4,3
- Highlight Optimized Natural Color
Enhanced natural color visualization
- NDVI
Based on combination of bands (B8 - B4)/(B8 + B4)
- False color (urban)
Based on bands 12,11,4
- Moisture index
Based on combination of bands (B8A - B11)/(B8A + B11)
- SWIR
Based on bands 12,8A,4
- NDWI
Based on combination of bands (B3 - B8)/(B3 + B8)
- NDSI
Based on combination of bands (B3 - B11)/(B3 + B11)

[Free sign up](#) for all features

Powered by [Sentinel Hub](#) v3.53.7

We are looking for feedback on EO Browser.
[Take survey](#) to participate!

Leaflet | © map data © OpenStreetMap contributors, © Sentinel Hub



МОНИТОРИНГ ПАВОДКОВОЙ ОБСТАНОВКИ НА ТЕРРИТОРИИ НИЖЕГОРОДСКОЙ ОБЛАСТИ НА Р. ПЬЯНА П. СОБОЛЕВО ГАГИНСКИЙ М.О



EO Browser ENGLISH [Login](#)

Discover Visualize Compare Pins

Dataset: Sentinel-2 L2A [Show L1C](#)

Date: 2024-04-04 [Timespan](#)

- True color
Based on bands 4,3,2
- False color
Based on bands 8,4,3
- Highlight Optimized Natural Color
Enhanced natural color visualization
- NDVI
Based on combination of bands (B8 - B4)/(B8 + B4)
- False color (urban)
Based on bands 12,11,4
- Moisture index
Based on combination of bands (B8A - B11)/(B8A + B11)
- SWIR
Based on bands 12,8A,4
- NDWI
Based on combination of bands (B3 - B8)/(B3 + B8)
- NDSI
Based on combination of bands (B3 - B11)/(B3 + B11)

[Free sign up](#) for all features

Powered by [Sentinel Hub](#) v3.53.7

We are looking for feedback on EO Browser.
[Take survey](#) to participate!



МОНИТОРИНГ ПАВОДКОВОЙ ОБСТАНОВКИ НА ТЕРРИТОРИИ НИЖЕГОРОДСКОЙ ОБЛАСТИ НА Р. ПЬЯНА П. НИКОЛЬСКОЕ ГАГИНСКИЙ М.О



EO Browser ENGLISH Login

Discover Visualize Compare Pins

Dataset: Sentinel-2 L2A Show L1C

Date: 2024-04-04 Timespan

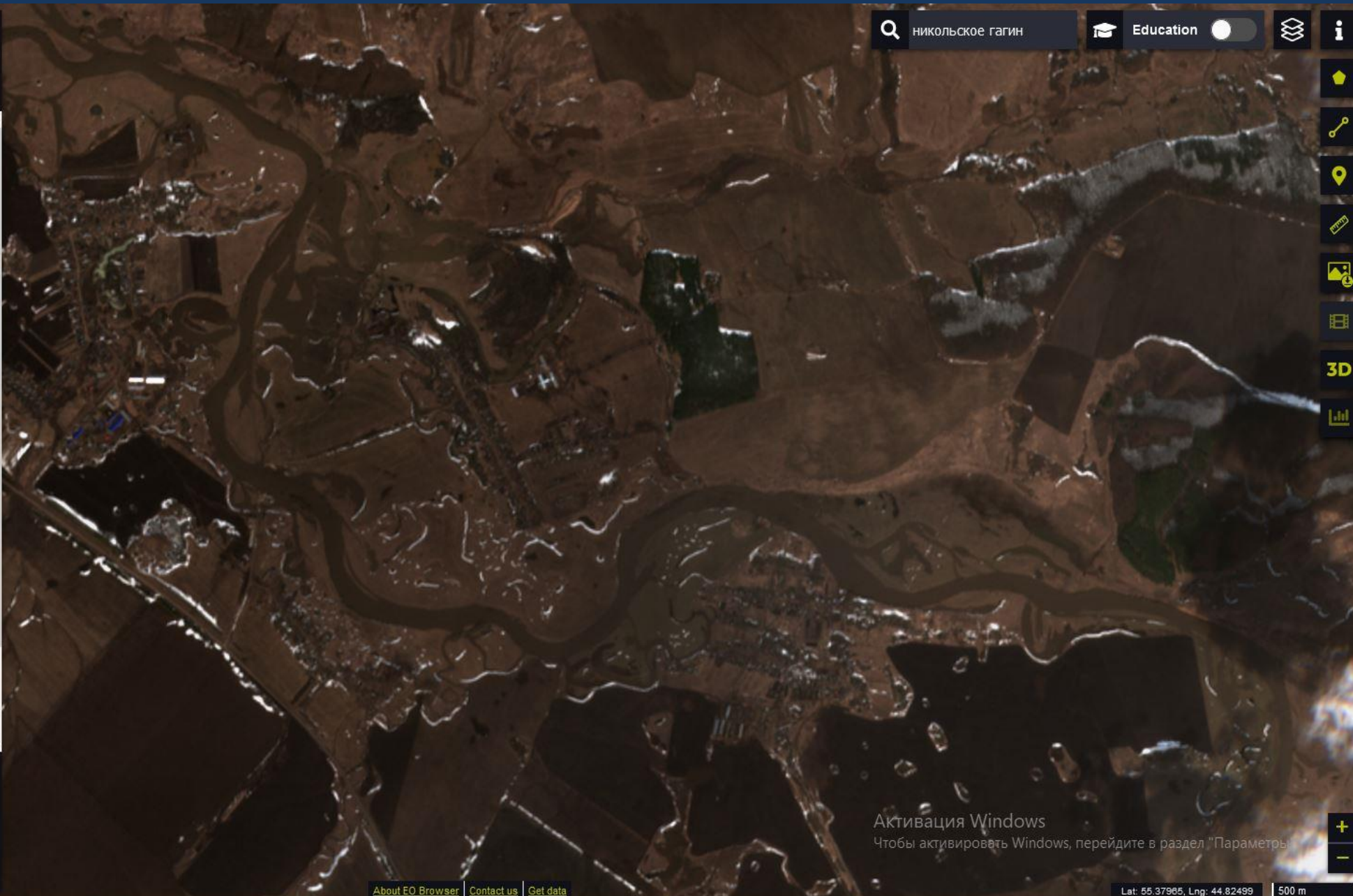
- True color
Based on bands 4,3,2
- False color
Based on bands 8,4,3
- Highlight Optimized Natural Color
Enhanced natural color visualization
- NDVI
Based on combination of bands $(B8 - B4)/(B8 + B4)$
- False color (urban)
Based on bands 12,11,4
- Moisture index
Based on combination of bands $(B8A - B11)/(B8A + B11)$
- SWIR
Based on bands 12,8A,4
- NDWI
Based on combination of bands $(B3 - B8)/(B3 + B8)$
- NDSI
Based on combination of bands $(B3 - B11)/(B3 + B11)$

[Free sign up](#) for all features

Powered by [Sentinel Hub](#) v3.53.7

We are looking for feedback on EO Browser.
[Take survey](#) to participate!

Leaflet | map data © OpenStreetMap contributors, © Sentinel Hub



МОНИТОРИНГ ПАВОДКОВОЙ ОБСТАНОВКИ НА ТЕРРИТОРИИ НИЖЕГОРОДСКОЙ ОБЛАСТИ НА Р. ПЬЯНА П. МИШУКОВО ГАГИНСКИЙ М.О



EO Browser ENGLISH Login

Discover Visualize Compare Pins

Dataset: Sentinel-2 L2A Show L1C

Date: 2024-04-04 Timespan

- True color
Based on bands 4,3,2
- False color
Based on bands 8,4,3
- Highlight Optimized Natural Color
Enhanced natural color visualization
- NDVI
Based on combination of bands $(B8 - B4)/(B8 + B4)$
- False color (urban)
Based on bands 12,11,4
- Moisture index
Based on combination of bands $(B8A - B11)/(B8A + B11)$
- SWIR
Based on bands 12,8A,4
- NDWI
Based on combination of bands $(B3 - B8)/(B3 + B8)$
- NDSI
Based on combination of bands $(B3 - B11)/(B3 + B11)$

[Free sign up](#) for all features

Powered by [Sentinel Hub](#) v3.53.7

We are looking for feedback on EO Browser.
[Take survey](#) to participate!

Leaflet | Map data © OpenStreetmap contributors, © Sentinel Hub



Search: юрьево гагинский

Education

3D

Map navigation icons: Home, Link, Location, Measure, Layers, Full Screen, 3D, Scale

МОНИТОРИНГ ПАВОДКОВОЙ ОБСТАНОВКИ НА ТЕРРИТОРИИ НИЖЕГОРОДСКОЙ ОБЛАСТИ НА Р. УМОНЬ Г.О. Г. ПЕРВОМАЙСК



EO Browser ENGLISH Login

Discover Visualize Compare Pins

Dataset: Sentinel-2 L2A **Show L1C**

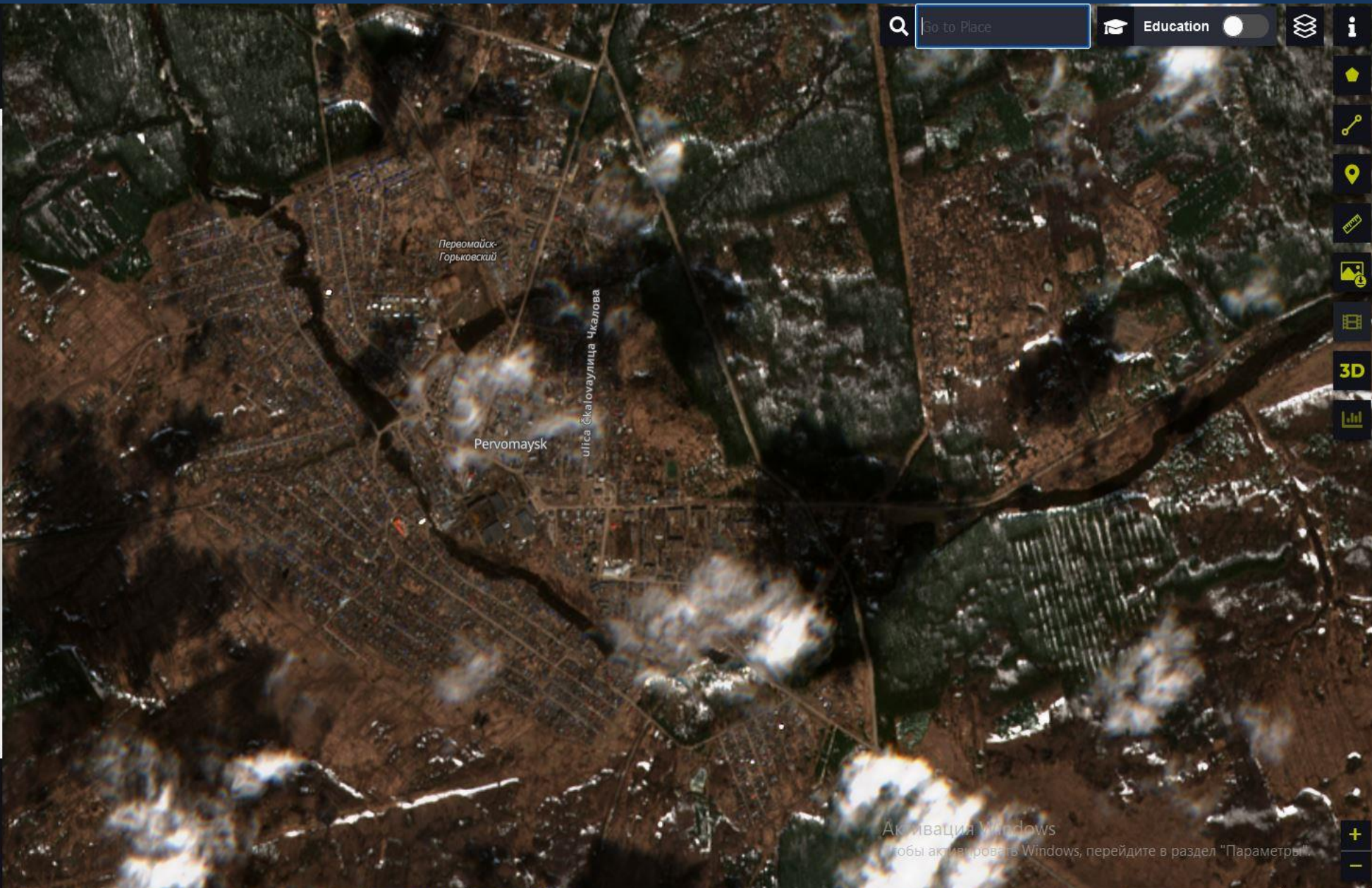
Date: 2024-04-04 Timespan

- True color
Based on bands 4,3,2
- False color
Based on bands 8,4,3
- Highlight Optimized Natural Color
Enhanced natural color visualization
- NDVI
Based on combination of bands (B8 - B4)/(B8 + B4)
- False color (urban)
Based on bands 12,11,4
- Moisture index
Based on combination of bands (B8A - B11)/(B8A + B11)
- SWIR
Based on bands 12,8A,4
- NDWI
Based on combination of bands (B3 - B8)/(B3 + B8)
- NDSI
Based on combination of bands (B3 - B11)/(B3 + B11)

[Free sign up](#) for all features

Powered by [Sentinel Hub](#) v3.53.7

We are looking for feedback on EO Browser.
[Take survey](#) to participate!



МОНИТОРИНГ ПАВОДКОВОЙ ОБСТАНОВКИ НА ТЕРРИТОРИИ НИЖЕГОРОДСКОЙ ОБЛАСТИ НА Р. АЛАТЫРЬ П. КОЧКУРОВО ПОЧИНКОВСКИЙ М.О.



EO Browser ENGLISH Login

Discover Visualize Compare Pins

Dataset: Sentinel-2 L2A **Show L1C**

Date: 2024-04-04 Timespan

- True color
Based on bands 4,3,2
- False color
Based on bands 8,4,3
- Highlight Optimized Natural Color
Enhanced natural color visualization
- NDVI
Based on combination of bands (B8 - B4)/(B8 + B4)
- False color (urban)
Based on bands 12,11,4
- Moisture index
Based on combination of bands (B8A - B11)/(B8A + B11)
- SWIR
Based on bands 12,8A,4
- NDWI
Based on combination of bands (B3 - B8)/(B3 + B8)
- NDSI
Based on combination of bands (B3 - B11)/(B3 + B11)

Free sign up for all features

Powered by Sentinel Hub v3.53.7

We are looking for feedback on EO Browser.
[Take survey](#) to participate!

Leaflet | © map data © OpenStreetMap contributors, © Sentinel Hub



МОНИТОРИНГ ПАВОДКОВОЙ ОБСТАНОВКИ НА ТЕРРИТОРИИ НИЖЕГОРОДСКОЙ ОБЛАСТИ НА Р. САТИС ЗАТО САРОВ



EO Browser ENGLISH Login

Discover Visualize Compare Pins

Dataset: Sentinel-2 L2A **Show L1C**

Date: 2024-04-04 Timespan

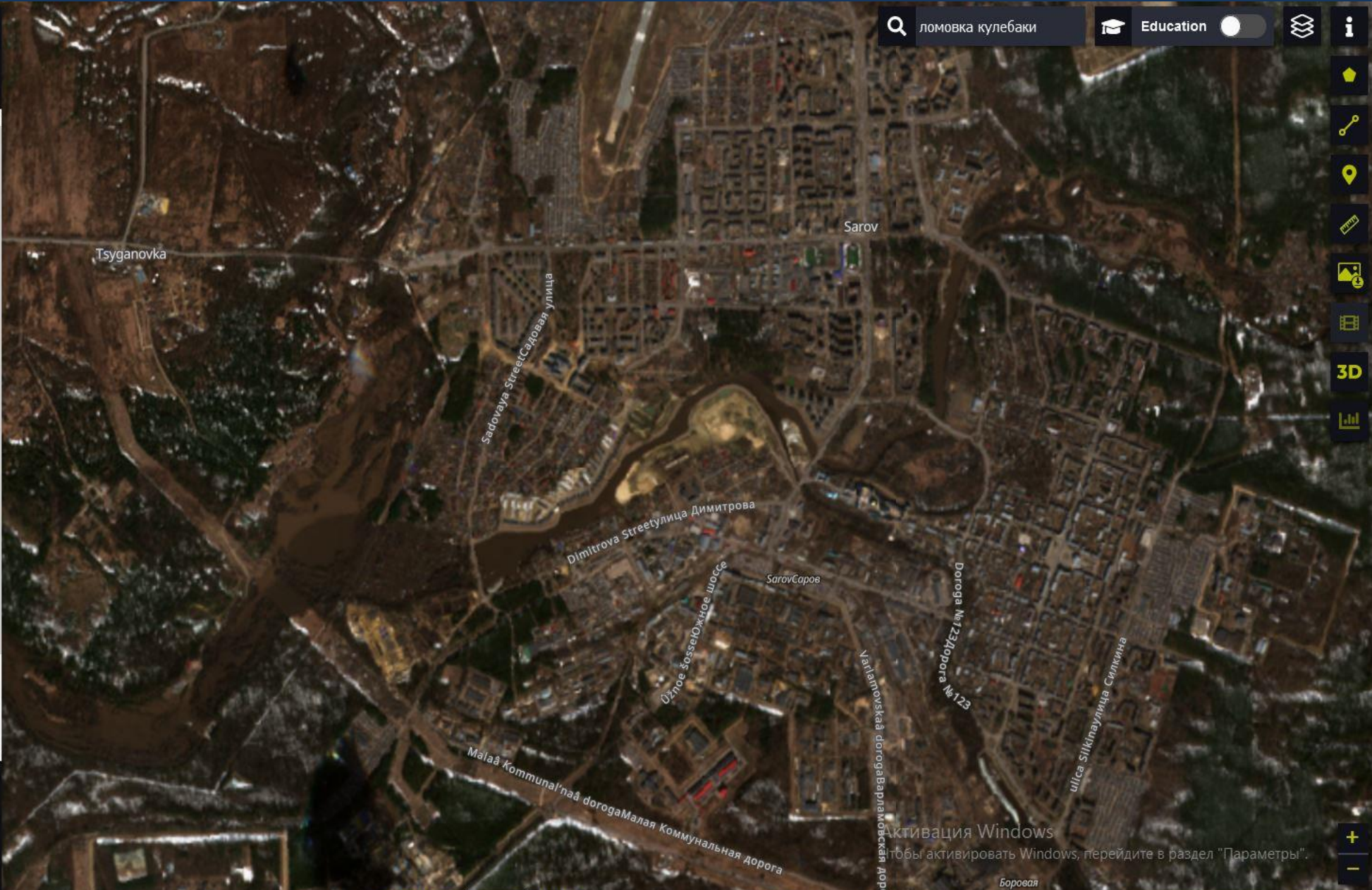
- True color
Based on bands 4,3,2
- False color
Based on bands 8,4,3
- Highlight Optimized Natural Color
Enhanced natural color visualization
- NDVI
Based on combination of bands (B8 - B4)/(B8 + B4)
- False color (urban)
Based on bands 12,11,4
- Moisture index
Based on combination of bands (B8A - B11)/(B8A + B11)
- SWIR
Based on bands 12,8A,4
- NDWI
Based on combination of bands (B3 - B8)/(B3 + B8)
- NDSI
Based on combination of bands (B3 - B11)/(B3 + B11)

[Free sign up](#) for all features

Powered by [Sentinel Hub](#) v3.53.7

We are looking for feedback on EO Browser.
[Take survey](#) to participate!

Leaflet | © maptiler © OpenStreetmap contributors, © Sentinel Hub



МОНИТОРИНГ ПАВОДКОВОЙ ОБСТАНОВКИ НА ТЕРРИТОРИИ НИЖЕГОРОДСКОЙ ОБЛАСТИ НА Р. ТЕША П. ШАТКИ ШАТКОВСКИЙ М.О.



EO Browser ENGLISH Login

Discover Visualize Compare Pins

Dataset: Sentinel-2 L2A **Show L1C**

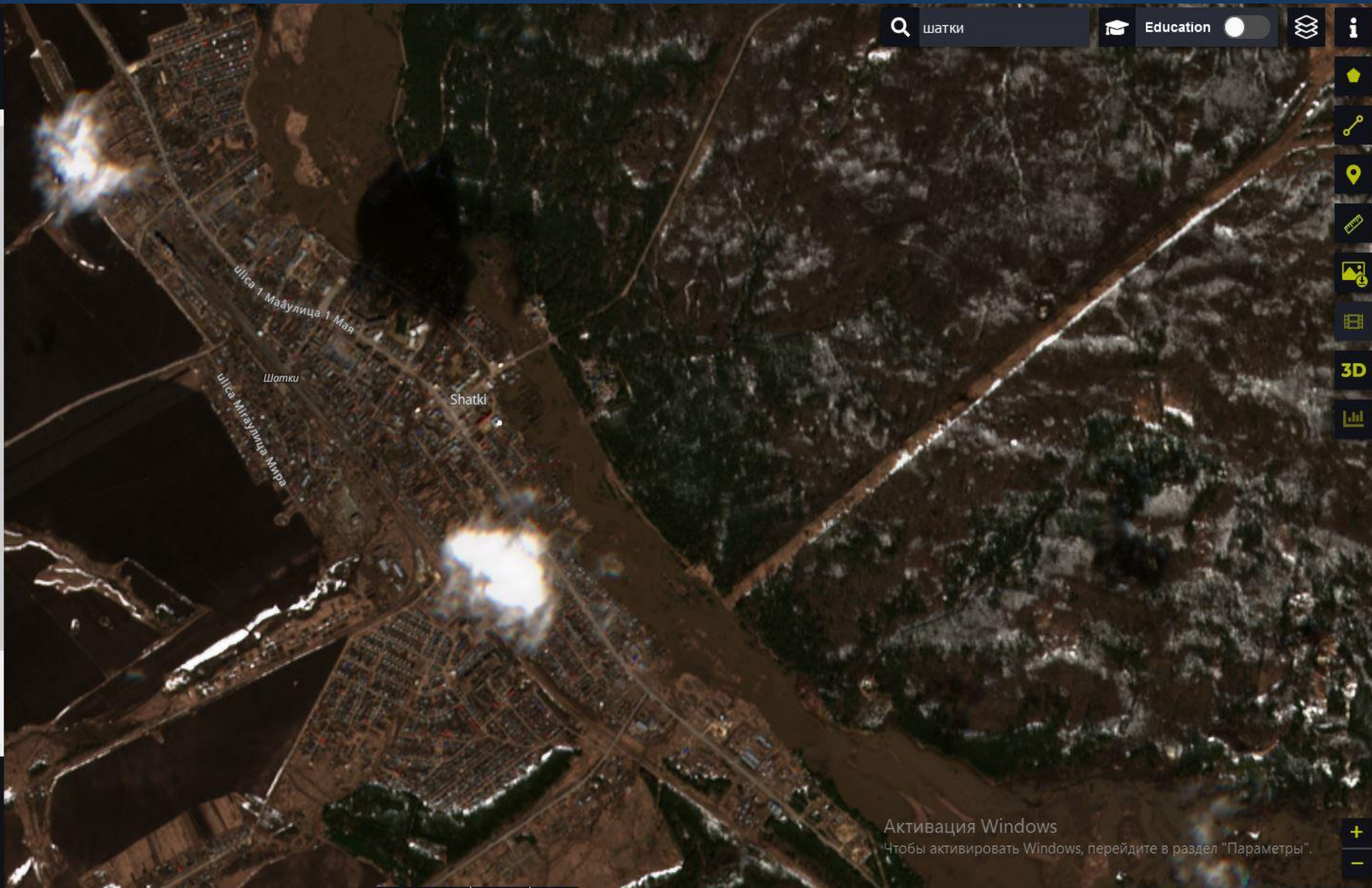
Date: 2024-04-04 Timespan

- True color
Based on bands 4,3,2
- False color
Based on bands 8,4,3
- Highlight Optimized Natural Color
Enhanced natural color visualization
- NDVI
Based on combination of bands $(B8 - B4)/(B8 + B4)$
- False color (urban)
Based on bands 12,11,4
- Moisture index
Based on combination of bands $(B8A - B11)/(B8A + B11)$
- SWIR
Based on bands 12,8A,4
- NDWI
Based on combination of bands $(B3 - B8)/(B3 + B8)$
- NDSI
Based on combination of bands $(B3 - B11)/(B3 + B11)$

[Free sign up](#) for all features

Powered by [Sentinel Hub](#) v3.53.7

We are looking for feedback on EO Browser.
[Take survey](#) to participate!



Активация Windows
Чтобы активировать Windows, перейдите в раздел "Параметры".

МОНИТОРИНГ ПАВОДКОВОЙ ОБСТАНОВКИ НА ТЕРРИТОРИИ НИЖЕГОРОДСКОЙ ОБЛАСТИ НА Р. ТЕША П. АРХАНГЕЛЬСКОЕ ШАТКОВСКИЙ М.О.



EO Browser ENGLISH Login

Discover Visualize Compare Pins

Dataset: Sentinel-2 L2A **Show L1C**

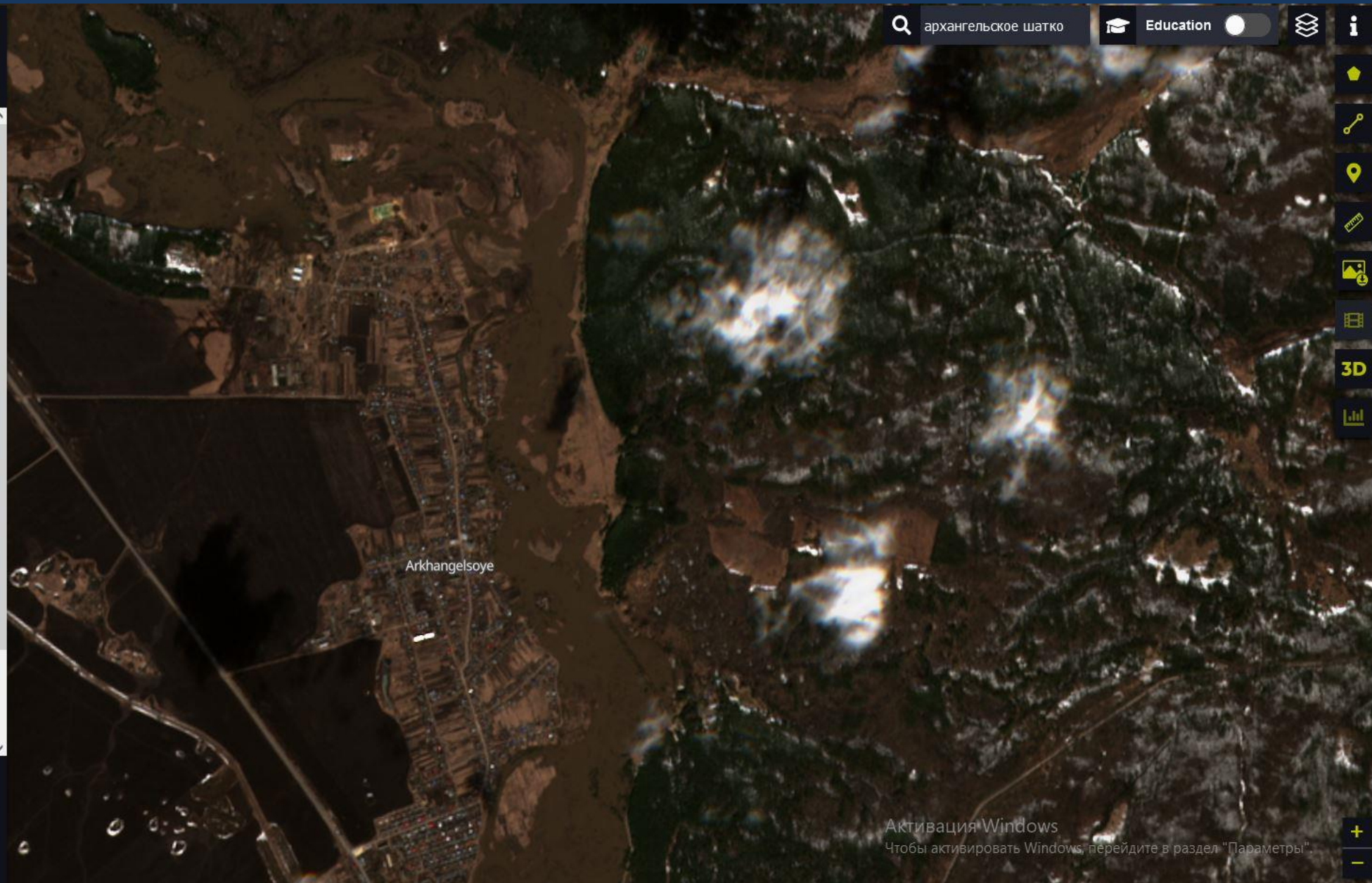
Date: 2024-04-04 Timespan

- True color
Based on bands 4,3,2
- False color
Based on bands 8,4,3
- Highlight Optimized Natural Color
Enhanced natural color visualization
- NDVI
Based on combination of bands $(B8 - B4)/(B8 + B4)$
- False color (urban)
Based on bands 12,11,4
- Moisture index
Based on combination of bands $(B8A - B11)/(B8A + B11)$
- SWIR
Based on bands 12,8A,4
- NDWI
Based on combination of bands $(B3 - B8)/(B3 + B8)$
- NDSI
Based on combination of bands $(B3 - B11)/(B3 + B11)$

[Free sign up](#) for all features

Powered by [Sentinel Hub](#) v3.53.7

We are looking for feedback on EO Browser.
[Take survey](#) to participate!



Активация Windows
Чтобы активировать Windows, перейдите в раздел "Параметры".

МОНИТОРИНГ ПАВОДКОВОЙ ОБСТАНОВКИ НА ТЕРРИТОРИИ НИЖЕГОРОДСКОЙ ОБЛАСТИ НА Р. ТЕША П. ПАСЬЯНОВО ШАТКОВСКИЙ М.О.



EO Browser ENGLISH [Login](#)

Discover Visualize Compare Pins

Dataset: Sentinel-2 L2A [Show L1C](#)

Date: 2024-04-04 [Timespan](#)

- True color
Based on bands 4,3,2
- False color
Based on bands 8,4,3
- Highlight Optimized Natural Color
Enhanced natural color visualization
- NDVI
Based on combination of bands (B8 - B4)/(B8 + B4)
- False color (urban)
Based on bands 12,11,4
- Moisture index
Based on combination of bands (B8A - B11)/(B8A + B11)
- SWIR
Based on bands 12,8A,4
- NDWI
Based on combination of bands (B3 - B8)/(B3 + B8)
- NDSI
Based on combination of bands (B3 - B11)/(B3 + B11)

[Free sign up](#) for all features

Powered by [Sentinel Hub](#) v3.53.7

We are looking for feedback on EO Browser.
[Take survey](#) to participate!



МОНИТОРИНГ ПАВОДКОВОЙ ОБСТАНОВКИ НА ТЕРРИТОРИИ НИЖЕГОРОДСКОЙ ОБЛАСТИ НА Р. УСТА Г. УРЕНЬ УРЕНСКИЙ М.О



EO Browser ENGLISH Login

Discover Visualize Compare Pins

Dataset: Sentinel-2 L2A **Show L1C**

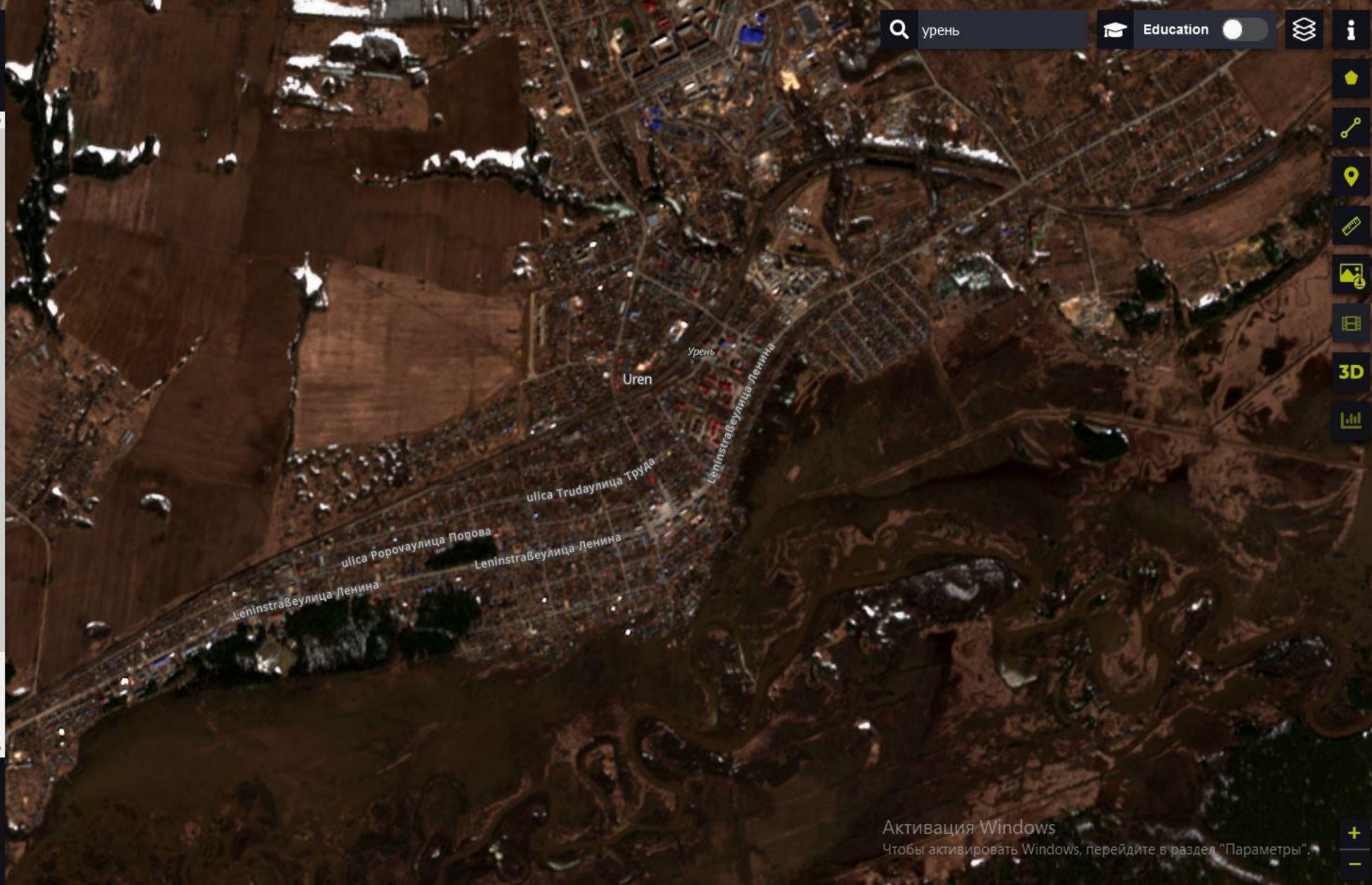
Date: 2024-04-06 Timespan

- True color
Based on bands 4,3,2
- False color
Based on bands 8,4,3
- Highlight Optimized Natural Color
Enhanced natural color visualization
- NDVI
Based on combination of bands (B8 - B4)/(B8 + B4)
- False color (urban)
Based on bands 12,11,4
- Moisture index
Based on combination of bands (B8A - B11)/(B8A + B11)
- SWIR
Based on bands 12,8A,4
- NDWI
Based on combination of bands (B3 - B8)/(B3 + B8)
- NDSI
Based on combination of bands (B3 - B11)/(B3 + B11)

[Free sign up](#) for all features

Powered by [Sentinel Hub](#) v3.53.7

We are looking for feedback on EO Browser.
[Take survey](#) to participate!



Активация Windows
Чтобы активировать Windows, перейдите в раздел "Параметры".

МОНИТОРИНГ ПАВОДКОВОЙ ОБСТАНОВКИ НА ТЕРРИТОРИИ НИЖЕГОРОДСКОЙ ОБЛАСТИ НА Р. УСТА П.ТЕМТА УРЕНСКИЙ М.О



EO Browser ENGLISH Login

Discover Visualize Compare Pins

Dataset: Sentinel-2 L2A **Show L1C**

Date: 2024-04-06 Timespan

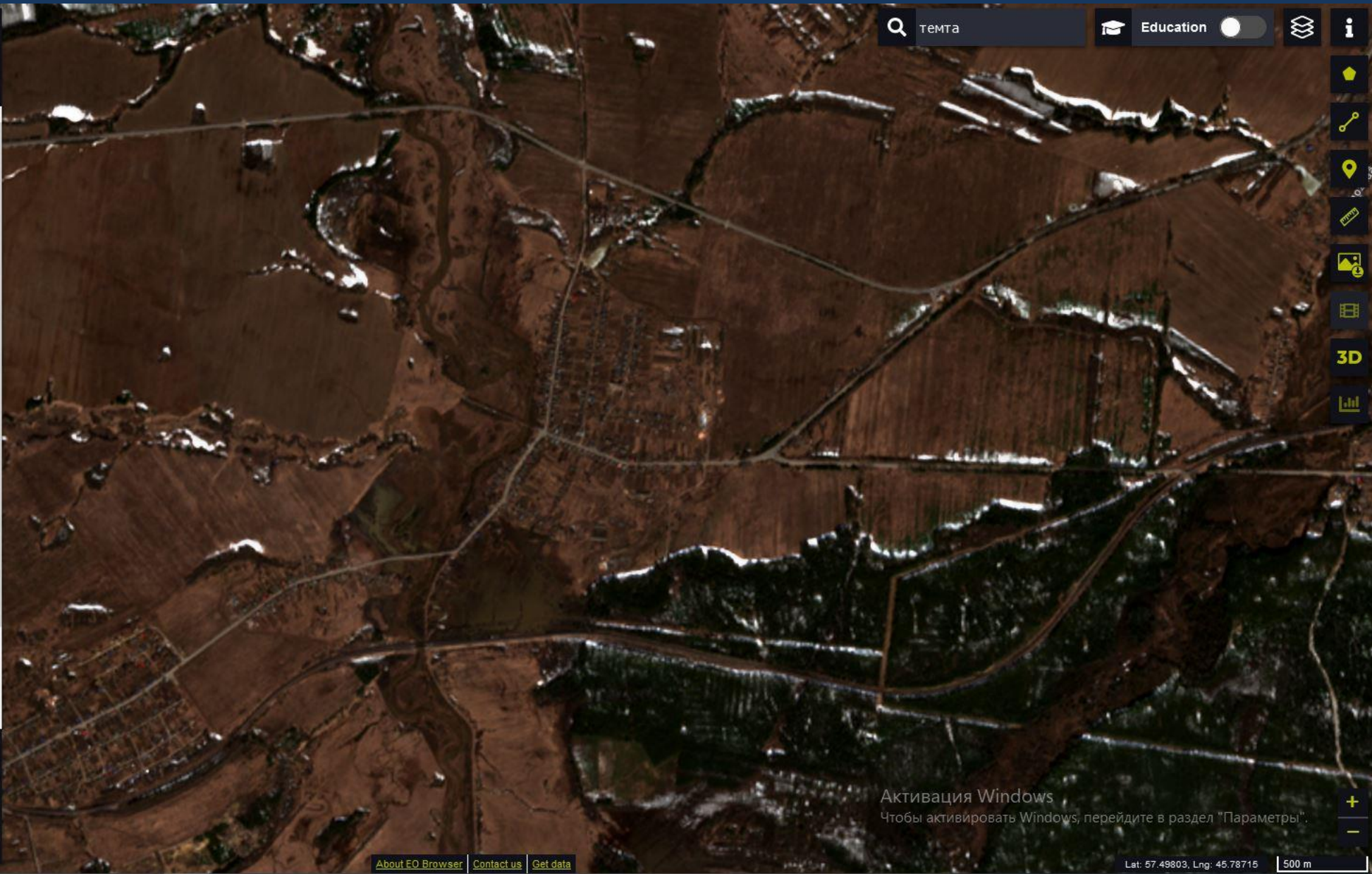
- True color
Based on bands 4,3,2
- False color
Based on bands 8,4,3
- Highlight Optimized Natural Color
Enhanced natural color visualization
- NDVI
Based on combination of bands $(B8 - B4)/(B8 + B4)$
- False color (urban)
Based on bands 12,11,4
- Moisture index
Based on combination of bands $(B8A - B11)/(B8A + B11)$
- SWIR
Based on bands 12,8A,4
- NDWI
Based on combination of bands $(B3 - B8)/(B3 + B8)$
- NDSI
Based on combination of bands $(B3 - B11)/(B3 + B11)$

[Free sign up](#) for all features

Powered by [Sentinel Hub](#) v3.53.7

We are looking for feedback on EO Browser.
[Take survey](#) to participate!

<https://forms.gle/TDC1xY2RHCRXjRRL7> introductors, © Sentinel Hub



Активация Windows
Чтобы активировать Windows, перейдите в раздел "Параметры".

МОНИТОРИНГ ПАВОДКОВОЙ ОБСТАНОВКИ НА ТЕРРИТОРИИ НИЖЕГОРОДСКОЙ ОБЛАСТИ НА Р. УСТА П.АТАЗИК УРЕНСКИЙ М.О



EO Browser ENGLISH Login

Discover Visualize Compare Pins

Dataset: Sentinel-2 L2A **Show L1C**

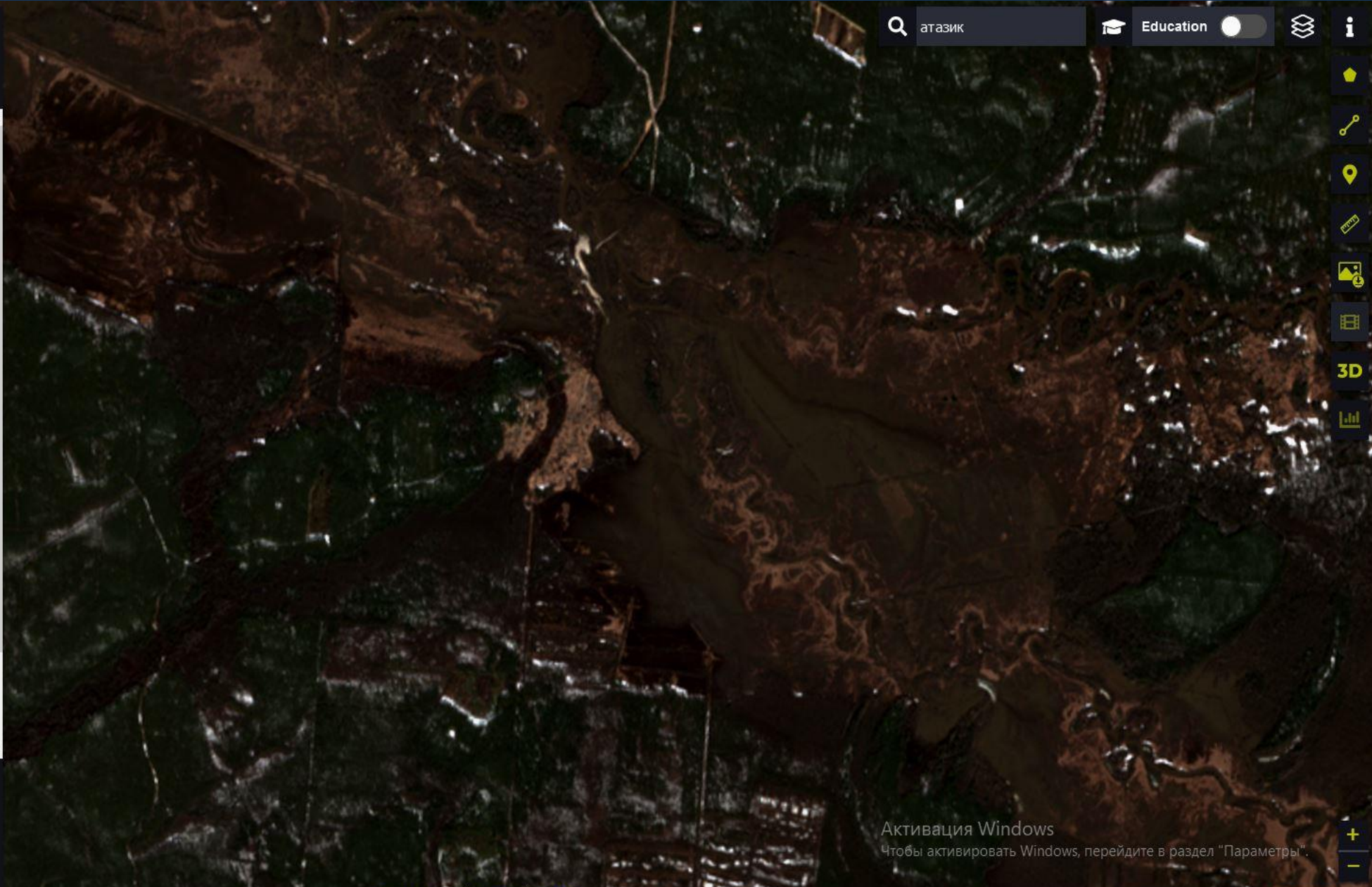
Date: 2024-04-06 Timespan

- True color
Based on bands 4,3,2
- False color
Based on bands 8,4,3
- Highlight Optimized Natural Color
Enhanced natural color visualization
- NDVI
Based on combination of bands $(B8 - B4)/(B8 + B4)$
- False color (urban)
Based on bands 12,11,4
- Moisture index
Based on combination of bands $(B8A - B11)/(B8A + B11)$
- SWIR
Based on bands 12,8A,4
- NDWI
Based on combination of bands $(B3 - B8)/(B3 + B8)$
- NDSI
Based on combination of bands $(B3 - B11)/(B3 + B11)$

[Free sign up](#) for all features

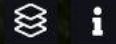
Powered by [Sentinel Hub](#) v3.53.7

We are looking for feedback on EO Browser.
[Take survey](#) to participate!



атазик

Education



Активация Windows
Чтобы активировать Windows, перейдите в раздел "Параметры".

МОНИТОРИНГ ПАВОДКОВОЙ ОБСТАНОВКИ НА ТЕРРИТОРИИ НИЖЕГОРОДСКОЙ ОБЛАСТИ НА Р. ТЕША П. ШИЛОКША Г.О. Г. КУЛЕБАКИ



EO Browser ENGLISH Login

Discover Visualize Compare Pins

Dataset: Sentinel-2 L2A **Show L1C**

Date: 2024-04-07 Timespan

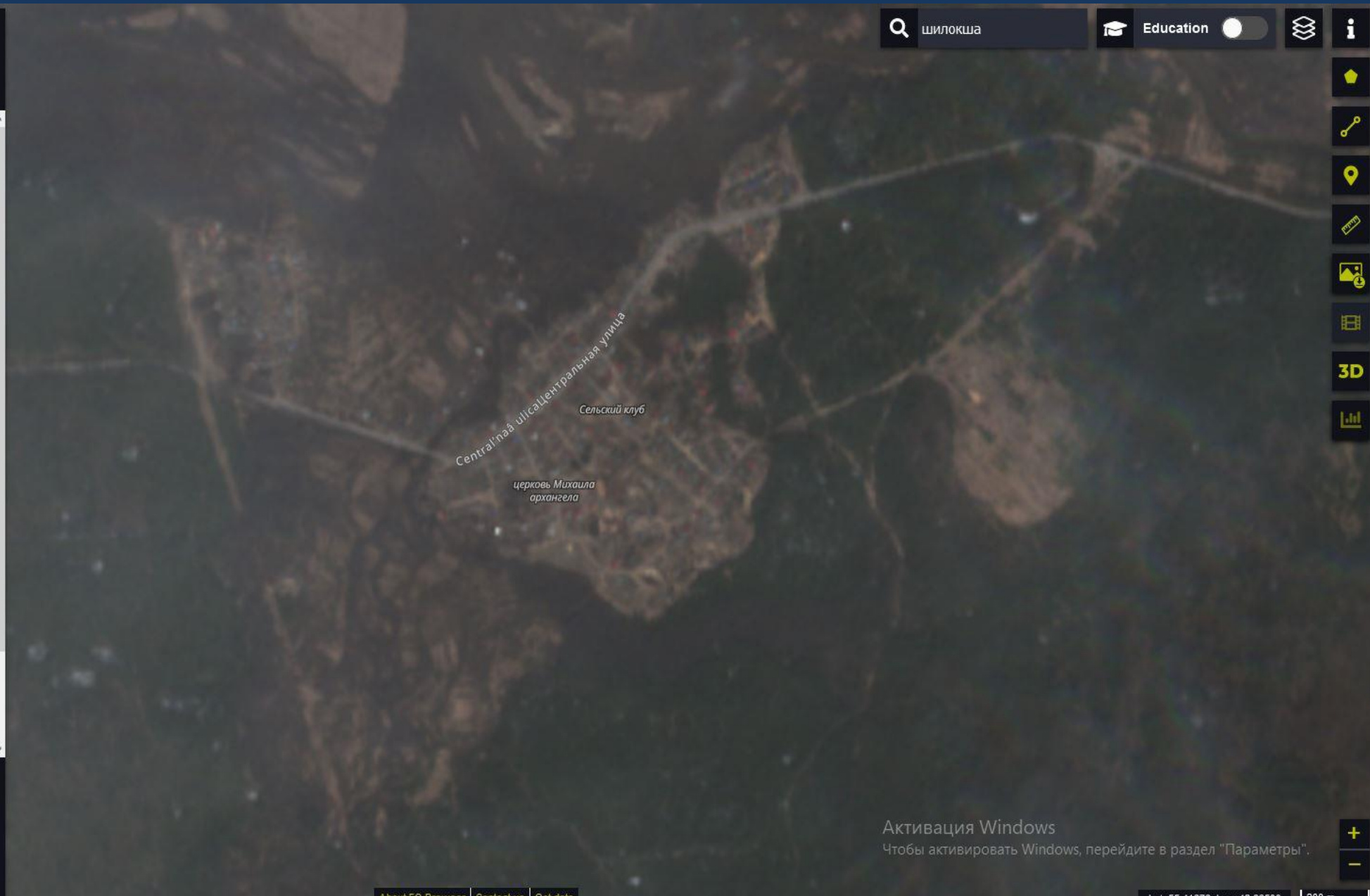
- True color
Based on bands 4,3,2
- False color
Based on bands 8,4,3
- Highlight Optimized Natural Color
Enhanced natural color visualization
- NDVI
Based on combination of bands (B8 - B4)/(B8 + B4)
- False color (urban)
Based on bands 12,11,4
- Moisture index
Based on combination of bands (B8A - B11)/(B8A + B11)
- SWIR
Based on bands 12,8A,4
- NDWI
Based on combination of bands (B3 - B8)/(B3 + B8)
- NDSI
Based on combination of bands (B3 - B11)/(B3 + B11)

[Free sign up](#) for all features

Powered by [Sentinel Hub](#) v3.53.7

We are looking for feedback on EO Browser.
[Take survey](#) to participate!

[About EO Browser](#) [Contact us](#) [Get data](#)



МОНИТОРИНГ ПАВОДКОВОЙ ОБСТАНОВКИ НА ТЕРРИТОРИИ НИЖЕГОРОДСКОЙ ОБЛАСТИ НА Р. ТЕША П. НАТАЛЬИНО Г.О. НАВАШИНСКИЙ



EO Browser ENGLISH Login

Discover Visualize Compare Pins

Dataset: Sentinel-2 L2A **Show L1C**

Date: 2024-04-07 Timespan

- True color
Based on bands 4,3,2
- False color
Based on bands 8,4,3
- Highlight Optimized Natural Color
Enhanced natural color visualization
- NDVI
Based on combination of bands (B8 - B4)/(B8 + B4)
- False color (urban)
Based on bands 12,11,4
- Moisture index
Based on combination of bands (B8A - B11)/(B8A + B11)
- SWIR
Based on bands 12,8A,4
- NDWI
Based on combination of bands (B3 - B8)/(B3 + B8)
- NDSI
Based on combination of bands (B3 - B11)/(B3 + B11)

[Free sign up](#) for all features

Powered by [Sentinel Hub](#) v3.53.7

We are looking for feedback on EO Browser.
[Take survey](#) to participate!

Leaflet | © map data © OpenStreetMap contributors, © Sentinel Hub

